

DARE 2B HEAD OFFICE

DARE 2B,
RISOL HOUSE, MERCURY WAY,
DUMPLINGTON, URMSTON,
MANCHESTER M41 7RR
ENGLAND
TELEPHONE: +44 (0) 161 749 1348
FACSIMILE: +44 (0) 161 749 1408
EXPORT SALES: +44 (0) 161 749 1381
E-MAIL: SALES@DARE2B.COM

REGIONAL SHOWROOMS

BELFAST
UNIT 21, 40 MONTGOMERY ROAD,
BELFAST BT6 9HL
TELEPHONE: 02890 791441

CORK
21 WESTSIDE CENTRE,
MODEL FARM ROAD, COUNTY CORK
TELEPHONE: 00353 21 430434

GLASGOW
UNIT 3, THE SQUARE, 95 MORRISON
STREET, GLASGOW G5 8BE
TELEPHONE: 0141 429 3752

LUTON
UNIT 5, IMPERIAL COURT,
LAPORTE WAY,
LUTON LU4 8FE
TELEPHONE: 01582 459928

NEWCASTLE
UNIT 4, APEX BUSINESS VILLAGE,
NORTHUMBERLAND BUSINESS PARK,
ANNITSFORD,
CRAMLINGTON NE23 7BF
TELEPHONE: 0191 250 2089

OXFORD
SUITE E, OXFORD EQUESTRIAN CENTRE,
LOWER ROAD, GARSINGTON,
OXON OX44 9DP
TELEPHONE: 01865 361083

SOUTH DOWNS
ASHENHURST HOUSE, BOSTAL ROAD,
STEYNING, WEST SUSSEX BN44 3PD
TELEPHONE: 01903 815445

WARWICKSHIRE
2 HENLEY COURT,
PRINCE HARRY ROAD
HENLEY-IN-ARDEN,
B95 5BA WARWICKSHIRE
TELEPHONE: 01654 794356

INTERNATIONAL OFFICES

DARE 2B USA,
55 MAIN STREET, SUITE 219,
NEWMARKET,
NH 03857 USA.
TELEPHONE: 603 292 6850
E-MAIL: HCRAIG@DARE2B.COM

DARE 2B BELUX
BAALHOEK 50
1853 STROMBEEK-BEVER,
BELGIUM.
TELEPHONE: 02 267 09 03
FACSIMILE: 02 267 87 97
E-MAIL: REGATTA@SCARLET.BE

DARE 2B SPAIN
CTRA M603 FUENCARRAL -
ALCOBENDAS KM 3,500
EDIFICIO 7, LOFTS 7,8,9
28108 ALCOBENDAS - MADRID
TELEPHONE: + 34 91 804 96 16
FACSIMILE: + 34 91 804 57 03
EMAIL: SPAIN@REGATTA.COM

DARE 2B FRANCE
32 RUE DE PARADIS, 75010 PARIS.
TELEPHONE: +33 (0) 1 40220822
FACSIMILE: +33 (0) 1 40220848
E-MAIL: FRANCE@REGATTA.COM

ANNECY
8, RUE DU BULLOZ, PARC DES GLAISINS,
ANNECY
PORTABLE: 06 30 86 27 62

SHOWROOM SUD OUEST / ANDORRE
25 ALLEE DU MOURA
ZONE DE LA NEGRESSE
BIARRITZ 64200
TELEPHONE: +33 (0) 6 10802685
E-MAIL: C.SANTAMARIA@REGATTA.COM

GERMANY/AUSTRIA
REGATTA GMBH,
REICHENBERGER STRASSE 1,
D-84130 DINGOLFING.
TELEPHONE: +49 (0) 8731 3191-0
FACSIMILE: +49 (0) 8731 319368
E-MAIL: GERMANY@REGATTA.COM

DARE 2B NETHERLANDS
KANTOOR EN SHOWROOM
NIEUWE MEERDIJK 297D,
1171 NS BADHOEVEDORP,
THE NETHERLANDS.
TELEPHONE: +31 (0) 20 4050555
FACSIMILE: +31 (0) 20 4050776
E-MAIL: NEDERLAND@REGATTA.COM

DARE 2B ITALY
VIA BASSANESE 61/1
31044 MONTEBELLUNA (TV)
ITALY
TELEPHONE: +39 0423 614 140
FACSIMILE: +39 0423 247289
E-MAIL ITALY@REGATTA.COM

DARE 2B FINLAND
HELSINKI SHOWROOM
NUIJAMIENTIE 5 C
00400 HELSINKI
TELEPHONE: +358/(0)10-470 2630
FACSIMILE: +358/(0)10-470 2639
E-MAIL: FINLAND@REGATTA.COM

DARE 2B ISRAEL
10 PLAUT ST. REHOVOT, 76706
TELEPHONE: +972-8-9365444
FACSIMILE: +972-8-9365080
E-MAIL: ISRAEL@REGATTA.COM

DARE 2B POLAND
REGATTA POLSKA SP. Z O.O.
EASTERN EUROPE OFFICE
UL. 17 STYCZNIA 56
02-146 WARSZAWA
TELEPHONE: +48 22 498 70 83
FACSIMILE: +48 22 500 28 85
E-MAIL: EASTERNEUROPE@REGATTA.COM
SPRZEDAZ@REGATTA.COM

DARE 2B CZECH REPUBLIC
PRAHA SHOWROOM:
PRUMYSLOVA 5
108 00
PRAHA 10
CZECH REPUBLIC
TELEPHONE: + 420 737 111 115
E-MAIL: CZECHREPUBLIC@REGATTA.COM

DISTRIBUTORS

ICELAND
UTIVIST & SPORT EHF.
TELEPHONE: 00-354-533-1550
E-MAIL:
UTIVISTOGSPORT@UTIVISTOGSPORT.IS

TURKEY
AND DAYANIKLI TÜKETİM MALLARI
TELEPHONE: +90 (212) 590 38 38
E-MAIL: INFO@ANDOUTDOOR.COM

CROATIA
PRO SPORT 98 D.O.
TELEPHONE: +385(0)1 6651 690
E-MAIL: INFO@PRO-SPORT.HR

BULGARIA
BULTRADE LTD
TEL/FAX ++359 2 8681820
TEL/FAX ++359 2 8624226
E-MAIL: BULTRADE@SLS.BG

SWITZERLAND
TRENDHOUSE 105B / 1. OG
THURGAUERSTRASSE 111
CH-8152 GLATTBRUGG
TELEPHONE: +41(0) 41 760 80 03
E-MAIL: MWSPORT@BLUEWIN.CH

AUSTRIA
TRAUNSTEINSPORT
GUGGENBERG 7
A-4656 KIRCHHAM
TELEPHONE: +43 (0) 761927373
E-MAIL: KARL.ATTWENGER@AON.AT

TAIWAN
OUTDOOR ACTIVE INTERNATIONAL CO.LTD
6F NO 128. XINHU 3RD ROND
NEIHU DISTRICT
114 TAIPEI CITY
TAIWAN
TELEPHONE: +886/2-2793 8616
E-MAIL: JOHNLING@EASY-OUTDOOR.COM.TW

HUNGARY
WILD SPORT CO LTD
H-1031 BUDAPEST, ÖRLÖ U.9.
HUNGARY
TEL/FAX: +361 8200260
E-MAIL: HUNGARY@REGATTA.COM

SLOVAKIA
BPM SPORT S.R.O.
A. MEDNANSKEHO 35
036 08 MARTIN
SLOVAKIA
TELEPHONE: + 421 43 4303961
FAX: +421 43 4303962
EMAIL: OBJEDNAVKY@BPMSPORT.SK

Dare 2b
welcome to our mountain

www.dare2b.com d2b and daretobe are Registered Trademarks of Regatta Limited.



Dare 2b
welcome to our mountain

SPRING / SUMMER 2013

WELCOME TO OUR MOUNTAIN

Here at Dare 2b we know it's not what we say but what we do that matters. We want products that are fit for purpose, without bulk, weighs less for a faster, lighter solution. That's why when it comes to developing our spring/summer 13 collection our athletes are out in all conditions putting our products to the test.

To see what our team members think of the range. Scan Now.



When it comes to business back at the office, we want to ensure you receive first class service from placing an order to merchandising it in store by offering great margin, blanket orders, fast delivery and instore training and support.

Contents

- 04 Mens
- 34 Womens
- 52 Youth
- 59 Rucksacks & Equipment
- 63 Accessories
- 65 Fabrics
- 67 Size Chart

DARE 2b
welcome to our mountain

@oscarpereiro

Tour de France winner

43,972

Followers

Our brand ambassador Oscar Pereiro is so impressed with our AEP range he's put his name to it.

Cycling has taught me important life values, what it means to strive for improvement and the satisfaction of achieving things I didn't think were possible. Winning the Tour De France was one of the best moments of my life but I've experienced some tough time too and I have the battle scars to show for it. I wouldn't have been able to do any of it if I didn't love this sport.

Dare 2b's new range of Advanced Ergonomic Performance (AEP) gear is designed in collaboration with Oscar Pereiro, it allows the rider to experience optimum comfort. With an articulated cut, strategically placed shaped seams and panels, the rider when in position will feel the garment mould to the shape of their body. The collection is not just for the pros but is for anyone who wants to take part and challenge themselves but have fun doing it.



DMT092 AEP L/S JERSEY

Sizes: S-XXXL



- Advanced Ergonomic Performance (AEP)
- 87% Polyester/ 13% elastane brushed back stretch fabric - 280gsm
- Good wicking performance
- Quick drying
- Full length venting zip with autolock slider
- Articulated sleeve design
- Shaped collar & cuff design
- Long back with scooped elasticated hem
- Branded gel gripper tape at hem
- 3 compartment pockets at rear with zipped security pocket
- Reflective detail for enhanced visibility
- Branded removable pin badge



White / Black (7P5)



Black (800)

DMT093 AEP S/S JERSEY

Sizes: S-XXXL



- Advanced Ergonomic Performance (AEP)
- BODY Lightweight 88% Polyester/ 12% elastane stretch fabric - 200gsm
- Anti-bacterial odour control treatment
- Good wicking performance
- Quick drying
- 3/4 length venting zip
- Long back with scooped elasticated hem
- Branded gel gripper tape at hem
- 3 compartment pockets at rear with zipped security pocket
- Reflective detail for enhanced visibility
- Branded removable pin badge



Black (800)



White / Black (7P5)

DMJ074 AEP BIBBED SHORT

Sizes: S-XXXL

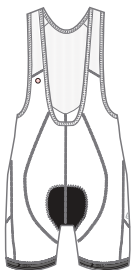


- Advanced Ergonomic Performance (AEP)
- 82% Nylon/ 18% elastane stretch fabric - 240gsm
- Lightweight
- Quick drying
- 3D molded stretch multi density insert with gel injection pads
- Coolmax moisture control and anti-bacterial treatment to insert
- Anatomically designed insert with Oxy Flow ventilation
- 8-panel constructural design
- Breathable mesh bib with good wicking properties
- Elastic comfort leg grippers with silicone print
- Flat locked seams for comfort
- Reflective detail for enhanced visibility
- Branded removable pin badge



Black (800)

AEP PAD



White / Black (900)

DML084 AEP WINDSHELL

Sizes: S-XXXL



- Advanced Ergonomic Performance (AEP)
- Ilus D-Lab woven stretch polyester fabric
- Windproof membrane
- Water repellent finish
- Long back with scooped elasticated hem
- Articulated sleeve design
- Shaped collar & cuff design
- 1 x zipped chest pocket
- 1 x zipped rear pocket
- Reflective detail for enhanced visibility
- Branded removable pin badge
- Weighs less than 400g, based on size L



Black (800)



White / Black (7P5)

DML085 AEP LIGHTWEIGHT WINDSHELL

Sizes: S-XXXL



- Advanced Ergonomic Performance (AEP)
- Ilus Windshell super lightweight polyamide fabric
- Wind resistant fabric
- Water repellent finish
- Long back with scooped elasticated hem
- Elasticated cuffs
- 1 x reflective zipped rear pocket with reversible puller
- Packs away into rear zipped pocket
- Reflective detail for enhanced visibility
- Branded removable pin badge
- Weighs less than 150g, based on size L



White (900)



DMW080 AEP WATERPROOF

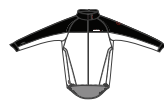
Sizes: S-XXXL



- Advanced Ergonomic Performance (AEP)
- Waterproof and breathable Ared 5000 lightweight polyester ripstop fabric
- Water repellent finish
- Taped seams
- Hi-tech water resistant centre front zip with inner zip guard
- Easy adjust neck cinch
- Articulated sleeve design
- Shaped collar & cuff design
- Long back with scooped elasticated hem
- 1 x zipped rear pocket with water repellent zip
- Reflective detail for enhanced visibility
- Branded removable pin badge
- Weighs less than 300g, based on size L




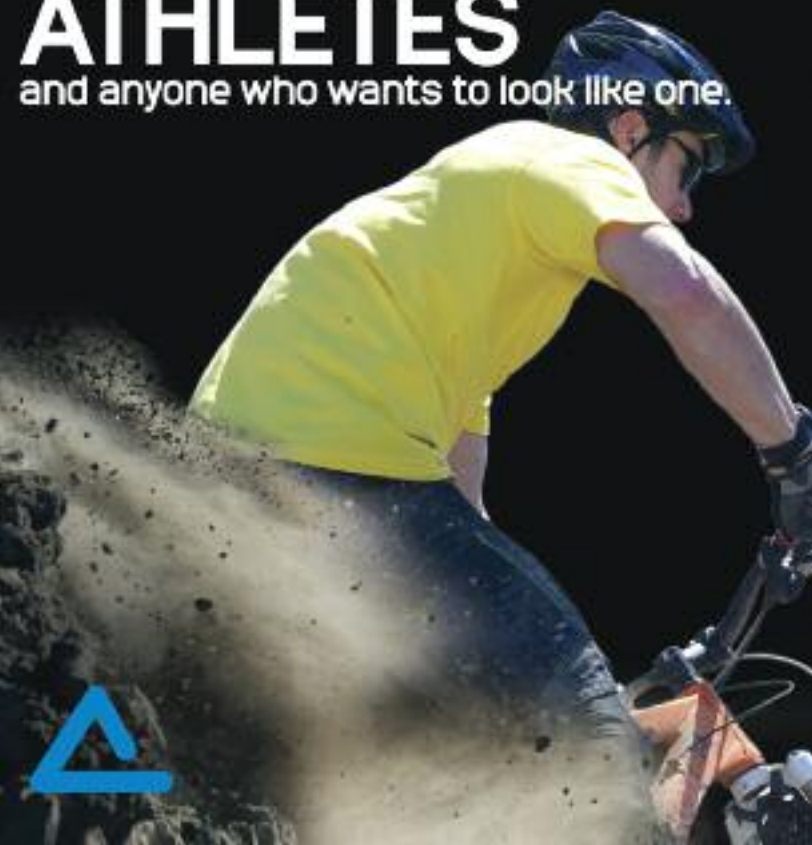
Black (800)



White / Black (7P5)

ATHLETES

and anyone who wants to look like one.



09

JERSEYS

DMT077 COUNTERACT JERSEY

Sizes: S-XXL



Hawaiian Blue Body Map Print (4DC)



- BODY lightweight polyester mesh fabric
- Anti-bacterial odour control treatment
- Good wicking performance
- Quick drying
- Mesh venting zones
- 3/4 length venting zip with autolock slider
- Stretch bound hem
- 1 x zipped security pocket
- Reflective detail for enhanced visibility



Black Body Map Print (800)



White Linear Gradient Print (900)

DMT078 ANTICS JERSEY

Sizes: S-XXL



Energy Green (3FR)



- BODY lightweight polyester honeycomb fabric
- Anti-bacterial odour control treatment
- Good wicking performance
- Quick drying
- Mesh venting zones
- 3/4 length venting zip with autolock slider
- Stretch bound hem
- 1 x zipped security pocket
- Reflective detail for enhanced visibility



Black (800)



Fiery Red (657)



Fluro Blue (3FN)

T-SHIRTS

DMT079 ORIGATION T

Sizes: S-XXL



White Contour Print (900)



Hawaiian Blue Contour Print (4DC)



Key Lime Contour Print (59Y)



- Lightweight polyester mesh fabric
- Good wicking performance
- Quick drying
- Mesh venting zones
- 1 x zipped security pocket
- Reflective detail for enhanced visibility

DMT080 AUDACIOUS T

Sizes: S-XXL



Fluro Blue (3FN)



Black (800)



Energy Green (3FR)



Fiery Red (657)



Briar Grey (867)



- Lightweight polyester mesh fabric
- Good wicking performance
- Quick drying
- Mesh venting zones
- Reflective detail for enhanced visibility

DMT063 BOARDBREAK T

Sizes: S-XXXL



Fiery Red (657)



Black (800)



Hawaiian Blue (4DC)



Fluro Yellow (0M0)



Fluro Green (59X)



- Lightweight polyester mesh fabric
- Good wicking performance
- Quick drying
- Reflective detail for enhanced visibility

T-SHIRTS

DMT085 STROBE BIKE T

Sizes: S-XXL



- Q-Wic+ Polyester fabric with cotton handfeel
- Anti-bacterial odour control treatment
- Good wicking performance
- Quick drying



Black (800)



Ash Grey Marl (3G0)



Hawaiian Blue (4DC)

DMT090 SPROCKET T

Sizes: S-XXL



- Q-Wic+ Cotton/ Polyester fabric
- Anti-bacterial odour control treatment
- Good wicking performance
- Quick drying



Charcoal Grey Marl (87S)



Hawaiian Blue (4DC)



Grape (420)

DMT082 BLOC MOUNT T

Sizes: S-XXL



- Q-Wic+ Polyester fabric with cotton handfeel
- Anti-bacterial odour control treatment
- Good wicking performance
- Quick drying



White (900)



Energy Green (3FR)



Ash Grey Marl (3G0)

DMT084 UNDERGROUND T

Sizes: S-XXL



- Q-Wic+ Cotton/ Polyester fabric
- Anti-bacterial odour control treatment
- Good wicking performance
- Quick drying



Grape (420)



Charcoal Grey Marl (87S)



Energy Green (3FR)

DMT083 BIKE MUNKIE T

Sizes: S-XXL



- Q-Wic Cotton/ Polyester fabric
- Good wicking performance
- Quick drying



Hawaiian Blue (4DC)



Ash Grey Marl (3G0)



Bright Yellow (0QX)



White (900)

DMT087 BIKE CLUB T

Sizes: S-XXL



- Q-Wic Cotton/ Polyester fabric
- Good wicking performance
- Quick drying



Fiery Red (657)



Ash Grey Marl (3G0)



Hawaiian Blue (4DC)

DMT086 MIS-MATCH T

Sizes: S-XXL



- Q-Wic Cotton/ Polyester fabric
- Good wicking performance
- Quick drying



Key Lime (59Y)



Charcoal Grey Marl (87S)



White (900)

LEGWEAR

DMJ070 MAGNIFY TROUSER

Sizes: 32" - 38" (inc 33")
Available in Regular and Long leg lengths



Black (800)



- Durable polyamide fabric with strategically placed 4-way stretch wear zones
- Water repellent finish
- Quick drying
- Shaped high back waistband for comfort
- Removable webbing belt
- Belt loops
- Leg ventilation zips
- Articulated knee design
- Multiple pockets including zipped pockets
- Reinforced overlay fabric at inner ankle
- Shaped back hem
- Adjustable shockcord hem

DMJ056 MOUNTED TROUSER

Sizes: 32" - 38" (inc 33")
Available in Regular and Long leg lengths



Desert Stone (659)



Black (800)



- Nylon/elastane stretch fabric
- Water repellent finish
- Lightweight
- Quick drying
- Adjustable shockcord waist and hem system
- Belt loops
- Multiple pockets including zipped pockets

DMJ058 MOUNTED SHORT

Sizes: 32" - 38" (inc 33")



Black (800)



Desert Stone (659)



- Nylon/elastane stretch fabric
- Water repellent finish
- Lightweight
- Quick drying
- Adjustable shockcord waist system
- Belt loops
- Multiple pockets including zipped pockets

DMJ060 CONTENDER CONVERTIBLE SHORT

Sizes: 32" - 38" (inc 33")



- Durable polyamide fabric with strategically placed 4-way stretch wear zones
- Water repellent finish
- Quick drying
- Adjustable waist system
- Interactive attachment loops at waistband
- Belt loops
- Articulated knee design
- Leg ventilation zips
- Reinforced hem overlays
- Multiple pockets including zipped pockets
- Interacts with DMJ066 & DMJ071



Briar Grey Juxtaposed Print (867)



Black (800)

DMJ063 RABBLE CONVERTIBLE SHORT

Sizes: 32" - 38" (inc 33")



- 100% washed cotton canvas
- Garment enzyme washed for softer handle
- Interactive attachment loops at waistband
- Belt loops
- Adjustable waist system
- Multiple pockets
- Interacts with DMJ066 & DMJ071



Desert Stone (659)



Briar Grey (867)

DMJ062 MOOCHED CONVERTIBLE SHORT

Sizes: 32" - 38" (inc 33")



- Lightweight dobby nylon fabric with strategically placed 4-way stretch wear zones
- Water repellent finish
- Quick drying
- Interactive attachment loops at waistband
- Belt loops
- Adjustable waist system
- Multiple pockets including zipped pockets
- Interacts with DMJ066 & DMJ071



Hawaiian Blue (4DC)



Black (800)

DMJ059 JOUNCE CONVERTIBLE SHORT

Sizes: 32" - 38" (inc 33")



- Soft handle peached polyester microfibre fabric
- Water repellent finish
- Interactive attachment loops at waistband
- Drawcord waist fastening
- Belt loops
- Hook & loop fly opening
- Multiple pockets
- Interacts with DMJ066 & DMJ071



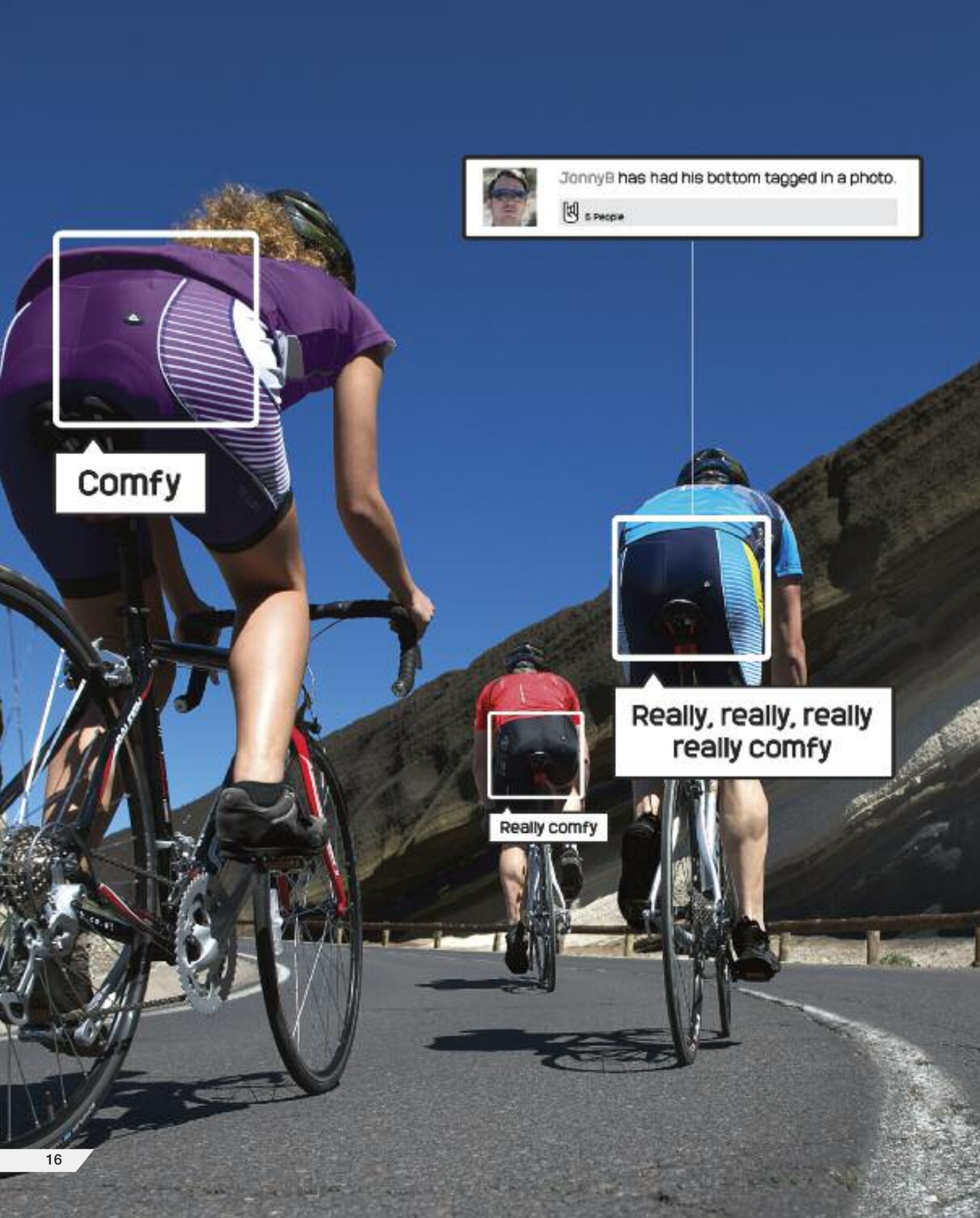
White / Hawaiian Blue Storm Print (900)



Black (800)



Key Lime / Hawaiian Blue (66A)



CYCLE PADDING

Our padded Insert range offers a full hierarchy of strategically placed padding designed to relieve pressure, regulate temperature whilst also controlling odour and bacteria. Each one is shaped perfectly to conform to the rider's anatomy and the shape of the saddle.

ELITE

Products: DMJ074, DMJ064, DMJ067 and DWJ067
For Advanced Performance, Racing and Training
Rides per week - 3-7



3 Layer Pad -
3mm + 8mm + 3mm Thick

- 3D molded multi density Insert with gel injection pads
- Coolmax moisture control and anti-bacterial treatment to Insert
- Anatomically designed Insert with Oxy Flow ventilation
- 4 way stretch technology moves and adjusts with the body
- Pre-shaped side wings to adapt to the riders body

PERFORMANCE

Products: DMJ073, DMJ065, DWJ064 and DWJ065
For Intermediate to Advanced Performance
Rides per week - 3-5



3 Layer Pad -
3mm + 8mm + 7mm Thick

- 3D molded multi density Insert
- Coolmax moisture control and anti-bacterial treatment to Insert
- Anatomically designed Insert with Oxy Flow ventilation
- 2 way stretch technology moves and adjusts with the body
- Pre-shaped side wings to adapt to the riders body

SPORTS

Products: DMJ066, and DWJ066
For Enthusiast to Intermediate
Rides per week - 2-5



1 Layer Pad - 11 mm Thick

- 2D moulded stretch multi density Insert
- Coolmax moisture control and anti-bacterial treatment to Insert
- Anatomically designed Insert

ACTIVITY

Products: DMJ071, DWJ071 and DKJ010
For Enthusiast to Occasional Rider
Rides per week - 1-4



1 Layer Pad - 11 mm Thick

- 2D molded double density Insert
- Anatomically designed Insert

LEGWEAR

DMJ064 PAYOFF BIBBED SHORT

Sizes: S-XXL



- Nylon/elastane stretch fabric
- Lightweight
- Quick drying
- 3D molded stretch multi density insert with gel injection pads
- Coolmax moisture control and anti-bacterial treatment to insert
- Anatomically designed insert with Oxy Flow ventilation
- 8-panel constructural design
- Breathable mesh bib with good wicking properties
- Elastic comfort leg grippers with silicone print
- Flat locked seams for comfort
- Reflective detail for enhanced visibility

ELITE PAD



Black (800)

DMJ073 UPSHOT II BIBBED SHORT

Sizes: XXS-XXL



- Nylon/elastane stretch fabric
- Lightweight
- Quick drying
- 8-panel constructural design
- 3D molded stretch multi density insert
- Coolmax moisture control and anti-bacterial treatment to insert
- Anatomically designed insert with Oxy Flow ventilation
- Flat locked seams for comfort
- Gel gripper tape at hem
- Reflective detail for enhanced visibility



PERFORMANCE PAD



Black (800)

DMJ067 VAULTED CYCLE SHORT

Sizes: S-XXL



- Nylon/elastane stretch fabric
- Lightweight
- Quick drying
- 3D molded stretch multi density insert with gel injection pads
- Coolmax moisture control and anti-bacterial treatment to insert
- Anatomically designed insert with Oxy Flow ventilation
- 8-panel constructural design
- Flat locked seams for comfort
- Elastic comfort leg grippers with silicone print
- Reflective detail for enhanced visibility

ELITE PAD



Peacoat Blue Race Print (87R)



Black Race Print (800)

DMJ065 JOLTED CYCLE SHORT

Sizes: S-XXL



- Nylon/elastane stretch fabric
- Lightweight
- Quick drying
- 3D molded stretch multi density insert
- Coolmax moisture control and anti-bacterial treatment to insert
- Anatomically designed insert with Oxy Flow ventilation
- 8-panel constructural design
- Part elasticated shaped waistband
- Flat locked seams for comfort
- Gel gripper tape at hem
- Reflective detail for enhanced visibility

PERFORMANCE PAD



Black (800)

LEGWEAR

DMJ066 SADDLE SURE CYCLE SHORT

Sizes: S-XXL



Black (800)



- Nylon/elastane stretch fabric
- Lightweight
- Quick drying
- 2D molded stretch multi density insert
- Coolmax moisture control and anti-bacterial treatment to insert
- Anatomically designed insert
- 6-panel constructural design
- Part elasticated shaped waistband
- Interactive attachment loops at waistband
- Flat locked seams for comfort
- Gel gripper tape at hem
- Reflective detail for enhanced visibility
- Interacts with DMJ060, DMJ062, DMJ063 & DMJ059

SPORTS PAD



DMJ071 ON YOUR BIKE II CYCLE SHORT

Sizes: S-XXXL



Black (800)



- Polyester/elastane stretch fabric
- Lightweight
- Quick drying
- 2D molded double density insert
- Anatomically designed insert
- Elasticated waistband
- Interactive attachment loops at waistband
- Flat locked seams for comfort
- Gel gripper tape at hem
- Interacts with DMJ060, DMJ062, DMJ063 & DMJ059

ACTIVITY PAD



DMJ068 BESTRIDE TIGHT

Sizes: S-XXL



Black (800)



- Polyester/elastane stretch fabric
- Lightweight
- Quick drying
- Elasticated and drawcord waist
- 1 x zipped rear pocket
- Gel gripper tape at hem
- Ankle zips
- Flat locked seams for comfort
- Reflective detail for enhanced visibility

DMJ072 BESTRIDE SHORT

Sizes: S-XXL



Black (800)



- Polyester/elastane stretch fabric
- Lightweight
- Quick drying
- Elasticated and drawcord waist
- 1 x zipped rear pocket
- Gel gripper tape at hem
- Flat locked seams for comfort
- Reflective detail for enhanced visibility

DMJ069 BOUNDER SHORT

Sizes: S-XXL



Black (800)



Black / Key Lime (47Y)



- 100% polyester fabric
- Lightweight
- Quick drying
- Mesh venting zones
- Elasticated and drawcord waist
- Inner brief
- 1 x zipped security pocket
- Reflective detail for enhanced visibility

WINDSHELLS

DML069 DOWNWIND WINDSHELL

Sizes: S-XXL

ILUS
D-LAB STRETCH



Black (800)



Key Lime (59Y)



- Ilus D-Lab woven stretch polyester fabric
- Windproof membrane
- Water repellent finish
- Reflective stretch bound collar
- Long back with scooped reflective stretch bound hem
- Reflective stretch bound cuff with elasticated thumb loops
- 1 x zipped chest pocket
- 1 x zipped rear pocket
- 360° Reflective detail for enhanced visibility
- Weighs less than 400g, based on size L
- Fabric waterproof up to 5000mm, breathability rating 10,000/m2/24hrs

DML070 SCAMPERED ZIP OFF WINDSHELL

Sizes: S-XXL

ILUS
WINDSHELL



Black (800)



Gilet - Black (800)



Fluro Green / Black (59X)



Gilet - Fluro Green / Black (59X)



- Ilus Windshell lightweight polyester fabric
- Wind resistant fabric
- Water repellent finish
- 2-in-1 design
- Zip off sleeves convert jacket to gilet
- Stretch bound cuff and hem
- Mesh ventilated back panels
- 1 x zipped rear pocket
- Reflective detail for enhanced visibility
- LED compatible
- Weighs less than 300g, based on size L

DML083 ABSOLVE WINDSHELL

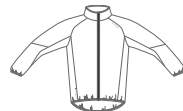
Sizes: S-XXL

ILUS
WINDSHELL

D-LYT
TECHNOLOGY



Fluro Blue (3FN)



White (900)



- Ilus Windshell super lightweight polyamide fabric
- Wind resistant fabric
- Water repellent finish
- Long back with scooped stretch bound hem
- Stretch bound cuff
- 1 x zipped rear pocket with reversible puller
- Packs away into rear zipped pocket
- Reflective detail for enhanced visibility
- LED compatible
- Weighs less than 150g, based on size L



Ben Savage
Epic day on the trails, check this shot out.
Posted 10 minutes ago



Hannah Barnes
Nice roast! You're the boy!
Posted 6 minutes ago



Greg Hetcher
This trail looks awesome, pretty scary though :D
Posted 10 minutes ago



WINDSHELLS

DML072 MAKE TRACKS WINDSHELL

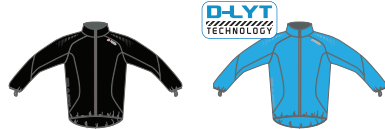
Sizes: S-XXL



Energy Green (3FR)



- Ilus Windshell lightweight polyester fabric
- Wind resistant fabric
- Water repellent finish
- Long back with scooped stretch bound hem
- Ventilated back panels
- Stretch bound cuff with elasticated thumb loops
- 360° Reflective detail for enhanced visibility
- Weighs less than 300g, based on size L



Black (800)

Fluro Blue (3FN)

DML080 ACCELERATE WINDSHELL

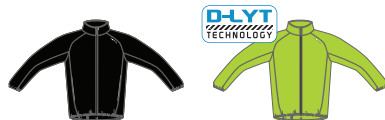
Sizes: S-XXXL



Fluro Yellow (0M0)



- Ilus Windshell lightweight polyester fabric
- Wind resistant fabric
- Water repellent finish
- Elasticated cuffs and hem
- Reflective detail for enhanced visibility
- Weighs less than 400g, based on size L



Black (800)

Fluro Green (59X)

SOFTSHELLS

DML081 SUPERSONIC SOFTSHELL

Sizes: S-XXXL



Key Lime (59Y)



Black (800)



- Ilus D-Lab woven stretch polyester fabric
- Windproof membrane
- Water repellent finish
- Lightweight
- Detachable technical hood with adjusters
- Ventilated back panel
- Stretch bound cuff
- 2 x zipped lower pockets
- Adjustable shockcord hem
- Reflective detail for enhanced visibility
- 35% lighter than our traditional D-LAB Softshell
- Weighs less than 400g, based on size L
- Fabric waterproof up to 5000mm, breathability rating 10,000/m2/24hrs

DML073 VELOCIOUS SOFTSHELL

Sizes: S-XXL



Hawaiian Blue (4DC)



Black (800)



- Ilus D-Lab woven stretch polyester fabric
- Windproof membrane
- Water repellent finish
- Lightweight
- Ventilated back panel
- 2 x zipped lower pockets
- Adjustable shockcord hem and neck cinch
- Stretch bound cuff
- Reflective detail for enhanced visibility
- 35% lighter than our traditional D-LAB Softshell
- Weighs less than 500g, based on size L
- Fabric waterproof up to 5000mm, breathability rating 10,000/m2/24hrs

DML074 VELOCIOUS SOFTSHELL GILET

Sizes: S-XXL



Black (800)



- Ilus D-Lab woven stretch polyester fabric
- Windproof membrane
- Water repellent finish
- Lightweight
- Stretch binding at armhole
- 1 x zipped chest pocket
- 1 x zipped rear pocket
- Adjustable shockcord hem and neck cinch
- Reflective detail for enhanced visibility
- 35% lighter than our traditional D-LAB Softshell
- Weighs less than 400g, based on size L
- Fabric waterproof up to 5000mm, breathability rating 10,000/m2/24hrs

SOFTSHELLS

DML075 INTERSECT SOFTSHELL

Sizes: S-XXL

ILUS
SOFTSHELL



- Ilus Softshell warm backed woven fabric
- Wind resistant fabric
- Water repellent finish
- Grown on hood with adjusters
- 2 x zipped lower pockets



White / Hawaiian Blue Storm Print (900)



Black Criss Cross Print (800)



Key Lime Marl Print (59Y)

DML082 CROSSCUT SOFTSHELL

Sizes: S-XXL

ILUS
SOFTSHELL



- Ilus Softshell warm backed woven fabric
- Wind resistant fabric
- Water repellent finish
- Grown on hood with adjusters
- 2 x zipped lower pockets



Hawaiian Blue / Briar Grey (4DC)



Black (800)



Fiery Red (657)

MIDLAYERS

DML077 MEANDER HOODIE

Sizes: S-XXL



Charcoal Grey Marl (87S)



Ash Grey Marl (3G0)

- Polyester jersey fabric with bonded scrim back
- Grown on hood with adjusters
- 1 x zipped chest pocket with internal MP3 port
- 2 x zipped lower pockets plus kangaroo handwarmer pockets

DML066 KNOW HOW HOODIE

Sizes: S-XXXL



Black (800)

- Polyester jersey fabric with bonded scrim back
- Grown on hood
- Kangaroo handwarmer pockets

DML022 FUSELINE CORE STRETCH

Sizes: S-XXXL

ILUS
CORE TECHNOLOGY



- Lightweight Ilus Core warm backed knitted stretch fabric
- Quick drying
- Half zip



Key Lime (59Y)



Black (800)



Blue Jewel (9VT)



Hydro Blue (3CK)



White (900)

MIDLAYERS

DMA040 STIMULATE FLEECE Sizes: S-XXXL



- Wula microfleece fabric
- Anti-pill finish
- Half zip with autolock slider



Black (800)



Hawaiian Blue (4DC)

DMA017 FREEZE DRY FLEECE Sizes: S-XXXL



- 1 side brushed/ 1 side anti-pill microfleece fabric
- Half zip



Fiery Red (657)



Black (800)



Briar Grey (867)

BASELAYERS

DMU021 CLIMATISE L/SLEEVE T Sizes: S-XXXL



- BODY carbon base layer - 51% polyester/ 49% Bamboo
- Natural wicking and anti-bacterial odour control properties
- Quick drying
- Thermal properties



Black (800)

DMU032 CLIMATISE S/SLEEVE T Sizes: S-XXXL



- BODY carbon base layer - 51% polyester/ 49% Bamboo
- Natural wicking and anti-bacterial odour control properties
- Quick drying
- Thermal properties



Black (800)

DMU020 CLIMATISE LEGGING Sizes: S-XXXL



- BODY carbon base layer - 51% polyester/ 49% Bamboo
- Natural wicking and anti-bacterial odour control properties
- Quick drying
- Thermal properties



Black (800)

DMU022 PULSED VEST Sizes: S-XXXL



- Lightweight polyester/ elastane mesh fabric
- Mesh construction for super ventilation and cooling features
- Moisture wicking performance
- Quick drying
- Flat locked seams for comfort



Black (800)



Hannah has commented on Ben's wall.

WATERPROOF JACKETS

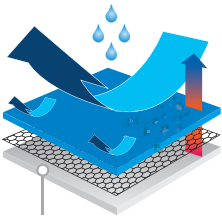
DMW073 INVINCIBLE JACKET

Sizes: S-XXL

ARED
V02 STRETCH 10 000



Black (800)



A modern alternative to traditional technical outdoor wear, this 3 layer membrane shell is waterproof and breathable up to 10000mm and provides full stretch for freedom of movement



- Waterproof & breathable Ared V02 10000 3-layer membrane polyester 4-way stretch fabric
- Durable water repellent finish
- Taped seams
- Grown on technical wired peaked hood with high collar and adjusters
- Roll away hood function
- Hi-tech water resistant centre front zip with inner zip guard
- 2-way underarm ventilation zippers
- 4 x pockets with hi-tech water repellent zips
- Articulated sleeve design
- Adjustable cuffs with rubber tabs
- 1 x zipped sleeve pass pocket
- Adjustable shockcord hem
- 1 x zipped internal pocket incl. MP3 port
- Weights less than 800g, based on size L
- Breathability rating 10,000/m2/24hrs

DMW074 HEADSET JACKET

Sizes: S-XXXL

ARED
V02 STRETCH 20 000



Key Lime / Green Clover (59Y)



Black (800)



Hawaiian Blue / Classic Blue (4DC)



- Waterproof and breathable Ared V02 20000 polyester 4-way stretch fabric
- Durable water repellent finish
- Taped seams
- Grown on technical wired peaked hood with high collar and adjusters
- Roll away hood function
- Hi-tech water resistant centre front zip with inner zip guard
- Underarm ventilation zips
- Articulated sleeve design
- Adjustable cuffs
- 1 x zipped chest pocket with water repellent zip
- 2 x zipped lower pockets with water repellent zips
- Adjustable shockcord hem
- Part mesh, part polyester taffeta lining
- 1 x zipped internal pocket incl. MP3 port
- Weights less than 800g, based on size L
- Breathability rating 10,000/m2/24hrs

DMW075 CLAMPDOWN JACKET

Sizes: S-XXL

ARED
V02 STRETCH 10 000



Fiery Red (657)



Green Clover (87P)



Black (800)



- Waterproof and breathable Ared V02 10000 polyester 4-way stretch fabric
- Durable water repellent finish
- Taped seams
- Detachable technical wired peaked hood with adjusters
- Hi-tech water resistant centre front zip with inner zip guard
- Underarm ventilation zips
- Articulated sleeve design
- Adjustable cuffs
- 1 x zipped chest pocket
- 2 x longer length lower pockets with water repellent zips
- Adjustable shockcord hem
- Part mesh, part polyester taffeta lining
- 1 x zipped internal pocket incl. MP3 port
- Weights less than 800g, based on size L
- Breathability rating 10,000/m2/24hrs

WATERPROOF JACKETS / OVERTROUSERS

DMW077 ETHOS JACKET

Sizes: S-XXL



Key Lime (59Y)



Fiery Red (657)



Black (800)



- Waterproof and breathable Ared 5000 coated polyester fabric with strategically placed 4-way stretch panels
- Water repellent finish
- Taped seams
- Grown on technical wired peaked hood with adjusters
- Roll away hood function
- Magnetic closure to stormflap
- Adjustable cuffs
- 1 x zipped chest pocket
- 2 x zipped lower pockets
- Adjustable shockcord hem
- Part mesh, part polyester taffeta lining
- 1 x zipped internal pocket incl. MP3 port
- Reflective detail for enhanced visibility
- Weighs less than 600g, based on size L

DMW078 BOOSTED JACKET

Sizes: S-XXXL



Black / Lime Zest Storm Print (800)



Hawaiian Blue (4DC)



White Criss Cross Print (900)



Briar Grey Brushstrokes Print (867)



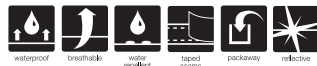
- Waterproof and breathable Ared 5000 coated polyester fabric
- Water repellent finish
- Taped seams
- Grown on hood with adjusters
- Elasticated cuffs
- 2 x zipped lower pockets
- Adjustable shockcord hem
- Mesh lined
- Packs away into zipped lower pocket with attachment system
- Weighs less than 500g, based on size L

DMW079 ASSEMBLE II OVERTROUSERS

Sizes: S-XXXL



Black (800)



- Waterproof and breathable Ared 5000 coated polyester fabric
- Water repellent finish
- Taped seams
- Elasticated and drawcord waist
- 2 side pocket openings
- Ankle zips
- Packs down into a small stuff sack with attachment system
- Reflective detail for enhanced visibility
- Weighs less than 300g, based on size L

DMW056 NIGHT HAWK JACKET

Sizes: S-XXXL



- Ared 5000 lightweight waterproof & breathable fabric
- Water repellent finish
- Taped seams
- Easy adjust neck cinch
- Mesh ventilated back panels
- 1 x zipped chest pocket
- 1 x zipped rear pocket
- LED compatible
- Adjustable cuffs
- Adjustable shockcord hem
- Mesh lined
- 360° Reflective detail for enhanced visibility
- Weighs less than 800g, based on size L



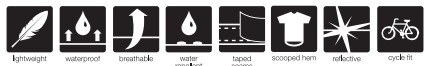
Fluro Green (59X)



Black (800)

DMW063 MENS AQ-LITE JACKET

Sizes: S-XXXL



- Lightweight waterproof and breathable Ared 3000 fabric
- Water repellent finish
- Taped seams
- Easy adjust neck cinch
- Long back with scooped elasticated hem
- 1 x zipped rear pocket
- Reflective detail for enhanced visibility
- Weighs less than 700g, based on size L



Black (800)



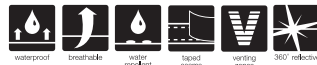
Fluro Yellow (0M0)



Fluro Blue (3FN)

DMW062 MENS ROTATION JACKET

Sizes: S-XXXL



- Waterproof and breathable Ared 3000 fabric
- Water repellent finish
- Taped seams
- Easy adjust neck cinch
- Mesh ventilated back panels
- 1 x zipped chest pocket
- 1 x zipped rear pocket
- Adjustable shockcord hem
- Mesh lined
- 360° Reflective detail for enhanced visibility
- Weighs less than 800g, based on size L



Fluro Yellow (0M0)



Black (800)

DMW061 OBSTRUCTION OVERTROUSERS

Sizes: XS-XXL



- Waterproof and breathable Ared 5000 coated polyester fabric
- Water repellent finish
- Taped seams
- Elasticated and drawcord waist
- 2-way side ventilation zippers
- Adjustable hook and loop tabs at ankle
- Fold away shaped reflective hem cuff
- Reflective detail for enhanced visibility
- Weighs less than 500g, based on size L



Black (800)

WOMEN'S

MULTISPORT

FAST

FEARLESS

FIVE-STAR

FEMININE

TOUGH

FUN

FASHIONABLE

FIT

with added phwoar factor.

JERSEYS

DWT075 SET OFF JERSEY

Sizes: UK: 8-18
USA: 4-14



Black (800)

- BODY lightweight polyester/elastane stretch fabric
- Anti-bacterial odour control treatment
- Good wicking performance
- Quick drying
- Stretch mesh venting zones
- 3/4 length venting zip with autolock slider
- Long back with scooped elasticated hem
- Branded gel gripper tape at hem
- 3 compartment pockets at rear with zipped security pocket
- Reflective detail for enhanced visibility



Magenta (868)



White (900)

DWT089 GET GONE JERSEY

Sizes: UK: 8-18
USA: 4-14



- BODY lightweight polyester mesh fabric
- Anti-bacterial odour control treatment
- Good wicking performance
- Quick drying
- Mesh venting zones
- 3/4 length venting zip with autolock slider
- Long back with scooped elasticated hem
- 3 compartment pockets at rear
- Reflective detail for enhanced visibility



White Pursuit Print (900)



Blue Wave Ripple Print (4PL)

DWT077 ILLUMINEE JERSEY

Sizes: UK: 8-18
USA: 4-14



- BODY lightweight polyester mesh fabric
- Anti-bacterial odour control treatment
- Good wicking performance
- Quick drying
- Mesh venting zones
- 3/4 length venting zip with autolock slider
- 1 x zipped security pocket
- Reflective detail for enhanced visibility



Blue Wave (4PL)



White Halo Print (900)



Magenta Motion Heat Print (868)

DWT076 RAPTURED JERSEY

Sizes: UK: 8-18
USA: 4-14



- BODY lightweight polyester mesh fabric
- Anti-bacterial odour control treatment
- Good wicking performance
- Quick drying
- Mesh venting zones
- 3/4 length zip with autolock slider
- Long back with scooped elasticated hem
- 3 compartment pockets at rear
- Reflective detail for enhanced visibility



Imperial Purple (94K)



White (900)



Key Lime (59Y)



Black (800)

DWT078 REFRESHED JERSEY

Sizes: UK: 8-18
USA: 4-14



- BODY lightweight polyester mesh fabric
- Anti-bacterial odour control treatment
- Good wicking performance
- Quick drying
- Mesh venting zones
- 3/4 length venting zip with autolock slider
- 1 x zipped security pocket
- Reflective detail for enhanced visibility



Black (800)



Fluro Blue (3FN)



White (900)

VESTS & T-SHIRTS

DWT073 BLAZED VEST

Sizes: UK: 8-18
USA: 4-14



- BODY lightweight polyester/elastane stretch fabric
- Anti-bacterial odour control treatment
- Good wicking performance
- Quick drying
- Stretch mesh venting zones
- Inner cropped vest
- 1 x zipped security pocket
- Reflective detail for enhanced visibility



Magenta (868)



Black (800)

DWT079 OVERHAUL T

Sizes: UK: 8-18
USA: 4-14



- Lightweight polyester mesh fabric
- Good wicking performance
- Quick drying
- Mesh venting zones
- 1 x zipped security pocket
- Reflective detail for enhanced visibility



Imperial Purple B'leave Print (94K)



Blue Wave Marl Print (4PL)



White DB Print (900)

DWT080 ACQUIRE T

Sizes: UK: 8-18
USA: 4-14



- Lightweight polyester mesh fabric
- Good wicking performance
- Quick drying
- Mesh venting zones
- Reflective detail for enhanced visibility



Virtual Pink (48S)



Fluro Blue (3FN)



Key Lime (59Y)



White (900)



Imperial Purple (94K)



Black (800)

DWT063 BLOOMBREAK T

Sizes: UK: 8-20
USA: 4-16



- Lightweight polyester mesh fabric
- Good wicking performance
- Quick drying
- Reflective detail for enhanced visibility



Black (800)



Magenta (868)



Blue Wave (4PL)



Energy Green (3FR)



Fluro Pink (72P)



White (900)

DWT085 PHOTOGRAPHIC T

Sizes: UK: 8-18
USA: 4-14



- Q-Wic+ Polyester fabric with cotton handfeel
- Anti-bacterial odour control treatment
- Good wicking performance
- Quick drying



Virtual Pink (48S)



White (900)



Ash Grey Marl (3G0)

DWT083 SPLATTERFLY T

Sizes: UK: 8-18
USA: 4-14



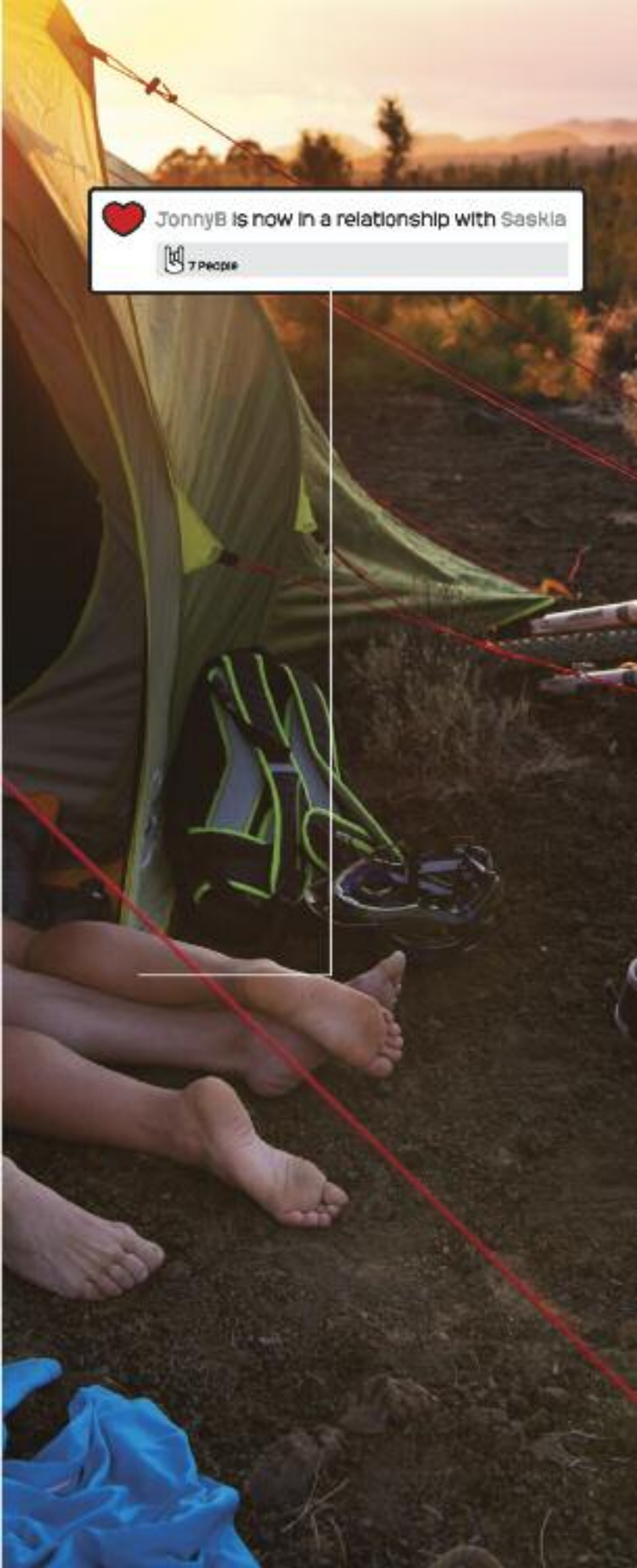
- Q-Wic+ Cotton/ Polyester fabric
- Good wicking performance
- Anti-bacterial odour control treatment
- Quick drying



White (900)



Ash Grey Marl (3G0)



T-SHIRTS

DWT082 ON THE TRAIL T

Sizes: UK: 8-18
USA: 4-14



- Q-Wic+ Cotton/ Polyester fabric
- Anti-bacterial odour control treatment
- Good wicking performance
- Quick drying



Charcoal Grey Marl (87S)



Magenta (868)



Energy Green (3FR)

DWT084 BIKE RACE T

Sizes: UK: 8-18
USA: 4-14



- Q-Wic+ Cotton/ Polyester fabric
- Anti-bacterial odour control treatment
- Good wicking performance
- Quick drying



Imperial Purple (94K)



Ash Grey Marl (3G0)



Charcoal Grey Marl (87S)

DWT087 BANDED T

Sizes: UK: 8-18
USA: 4-14



- Q-Wic Cotton/ Polyester fabric
- Good wicking performance
- Quick drying



White (900)



Charcoal Grey Marl (87S)



Blue Wave (4PL)

DWT086 GIVE ME A SIGN T

Sizes: UK: 8-18
USA: 4-14



- Q-Wic Cotton/ Polyester fabric
- Good wicking performance
- Quick drying



Blue Wave (4PL)



Ash Grey Marl (3G0)



White (900)

LEGWEAR

DWJ070 PROMINENCE TROUSER

Sizes: UK: 8-18 USA: 4-14
Available in Regular and Long leg lengths



- Durable polyamide fabric with strategically placed 4-way stretch wear zones
- Water repellent finish
- Quick drying
- Shaped high back waistband for comfort
- Removable webbing belt
- Belt loops
- Leg ventilation zips
- Articulated knee design
- Multiple pockets including zipped pockets
- Reinforced overlay fabric at inner ankle
- Shaped back hem
- Adjustable shockcord hem



Black (800)

DWJ056 ALIGHTED TROUSER

Sizes: UK: 8-18 USA: 4-14
Available in Regular and Long leg lengths



- Nylon/ elastane stretch fabric with 4-way ripstop stretch panels to the knee
- Water repellent finish
- Lightweight
- Quick drying
- Adjustable shockcord waist and hem system
- Belt loops
- Multiple pockets including zipped pockets



Desert Stone (659)



Black (800)

DWJ058 ALIGHTED SHORT

Sizes: UK: 8-18
USA: 4-14



- Nylon/elastane stretch fabric
- Water repellent finish
- Lightweight
- Quick drying
- Adjustable shockcord waist system
- Belt loops
- Multiple pockets including zipped pockets



Magenta (868)



Black (800)

LEGWEAR

DWJ060 ASTRIDE CONVERTIBLE SHORT

Sizes: UK: 8-18
USA: 4-14



Black (800)



- Durable polyamide fabric with strategically placed 4-way stretch wear zones
- Water repellent finish
- Quick drying
- Adjustable waist system
- Interactive attachment loops at waistband
- Belt loops
- Articulated knee design
- Leg ventilation zips
- Reinforced hem overlays
- Multiple pockets including zipped pockets
- Interacts with DWJ066 & DWJ071

DWJ062 HEIGHTEN CONVERTIBLE SHORT

Sizes: UK: 8-18
USA: 4-14



Blue Wave (4PL)



Black (800)



- Nylon/elastane stretch fabric
- Water repellent finish
- Quick drying
- Interactive attachment loops at waistband
- Belt loops
- Adjustable waist and hem system
- Multiple pockets including zipped pockets
- Interacts with DWJ066 & DWJ071

DWJ063 SKIDDOO CONVERTIBLE SHORT

Sizes: UK: 8-18
USA: 4-14



Desert Stone (659)



Briar Grey (867)



- 100% washed cotton canvas
- Garment enzyme washed for softer handle
- Interactive attachment loops at waistband
- Belt loops
- Adjustable waist system
- Multiple pockets
- Interacts with DWJ066 & DWJ071

DWJ067 ASPIRED CYCLE SHORT

Sizes: UK: 8-18
USA: 4-14



Imperial Purple Race
Print (94K)



Black Race Print
(800)



- Nylon/elastane stretch fabric
- Lightweight
- Quick drying
- 3D molded stretch multi density insert with gel injection pads
- Coolmax moisture control and anti-bacterial treatment to insert
- Anatomically designed insert with Oxy Flow ventilation
- 8-panel structural design
- Flat locked seams for comfort
- Elastic comfort leg grippers with silicone print
- Reflective detail for enhanced visibility

ELITE PAD



DWJ065 BLASTED CYCLE SHORT

Sizes: UK: 8-18
USA: 4-14



Black (800)



- Nylon/elastane stretch fabric
- Lightweight
- Quick drying
- 3D molded stretch multi density insert
- Coolmax moisture control and anti-bacterial treatment to insert
- Anatomically designed insert with Oxy Flow ventilation
- 8-panel structural design
- Part elasticated shaped waistband
- Flat locked seams for comfort
- Gel gripper tape at hem
- Reflective detail for enhanced visibility

PERFORMANCE PAD



LEGWEAR

DWJ064 REINVIGORATE CYCLE CAPRI

Sizes: UK: 8-18
USA: 4-14



- Nylon/elastane stretch fabric
- Lightweight
- Quick drying
- 3D molded stretch multi density insert
- Coolmax moisture control and anti-bacterial treatment to insert
- Anatomically designed insert with Oxy Flow ventilation
- 8-panel structural design
- Elastic comfort leg grippers with silicone print
- Flat locked seams for comfort
- Reflective detail for enhanced visibility



Black (800)

PERFORMANCE PAD



DWJ071 WOMENS ON YOUR BIKE II CYCLE SHORT

Sizes: UK: 8-20
USA: 4-16



- Polyester/elastane stretch fabric
- Lightweight
- Quick drying
- 2D molded double density insert
- Anatomically designed insert
- Elasticated waistband
- Interactive attachment loops at waistband
- Flat locked seams for comfort
- Gel gripper tape at hem
- Interacts with DWJ060, DWJ062 & DWJ063



Black (800)

ACTIVITY PAD



DWJ066 SADDLE SURE CYCLE SHORT

Sizes: UK: 8-18
USA: 4-14



- Nylon/elastane stretch fabric
- Lightweight
- Quick drying
- 2D molded stretch multi density insert
- Coolmax moisture control and anti-bacterial treatment to insert
- Anatomically designed insert
- 6-panel structural design
- Part elasticated shaped waistband
- Interactive attachment loops at waistband
- Flat locked seams for comfort
- Gel gripper tape at hem
- Reflective detail for enhanced visibility
- Interacts with DWJ060, DWJ062 & DWJ063



Black (800)

SPORTS PAD



DWJ068 TAILGATOR CAPRI

Sizes: UK: 8-18
USA: 4-14



- Polyester/elastane stretch fabric
- Lightweight
- Quick drying
- Elasticated waistband
- 1 x zipped rear pocket
- Flat locked seams for comfort
- Reflective detail for enhanced visibility



Black (800)



Black / Fluro Blue (ORS)

WINDSHELL

DWL069 UPWIND WINDSHELL

Sizes: UK: 8-18
USA: 4-14



Key Lime (59Y)



- Ilus D-Lab woven stretch polyester fabric
- Windproof membrane
- Water repellent finish
- Reflective stretch bound collar
- Long back with scooped reflective stretch bound hem
- Reflective stretch bound cuff with elasticated thumb loops
- 1 x zipped chest pocket
- 1 x zipped rear pocket
- 360° Reflective detail for enhanced visibility
- Weighs less than 400g, based on size 12
- Fabric waterproof up to 5000mm, breathability rating 10,000/m2/24hrs



Black (800)

DWL070 SCURRIED ZIP OFF WINDSHELL

Sizes: UK: 8-18
USA: 4-14



Black (800)



Gilet - Black (800)



- Ilus Windshell lightweight polyester fabric
- Wind resistant fabric
- Water repellent finish
- 2-in-1 design
- Zip off sleeves convert jacket to gilet
- Stretch bound cuff and hem
- Mesh ventilated back panel
- 1 x zipped rear pocket
- Reflective detail for enhanced visibility
- LED compatible
- Weighs less than 300g, based on size 12



Fluro Blue / Black (3FN)



Gilet - Fluro Blue / Black (3FN)

WINDSHELL

DWL083 CLARION WINDSHELL

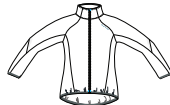
Sizes: UK: 8-18
USA: 4-14

ILUS
WINDSHELL

D-LYT
TECHNOLOGY



Fluro Pink (72P)



White (900)



- Ilus Windshell super lightweight polyamide fabric
- Wind resistant fabric
- Water repellent finish
- Long back with scooped stretch bound hem
- Stretch bound cuff
- 1 x zipped rear pocket with reversible puller
- Packs away into rear zipped pocket
- Reflective detail for enhanced visibility
- LED compatible
- Weighs less than 150g, based on size 12

DWL072 RUSHED WINDHSELL

Sizes: UK: 8-18
USA: 4-14

ILUS
WINDSHELL

D-NYT
360° REFLECTIVE



Magenta (868)



Black (800)



Fluro Blue (3FN)



- Ilus Windshell lightweight polyester fabric
- Wind resistant fabric
- Water repellent finish
- Long back with scooped stretch bound hem
- Ventilated back panels
- Stretch bound cuff with elasticated thumb loops
- 360° Reflective detail for enhanced visibility
- Weighs less than 200g, based on size 12

DWL080 DASHED WINDSHELL

Sizes: UK: 8-18
USA: 4-14

ILUS
WINDSHELL

D-LYT
TECHNOLOGY



Fluro Pink (72P)



Black (800)



Imperial Purple (94K)



- Ilus Windshell lightweight polyester fabric
- Wind resistant fabric
- Water repellent finish
- Elasticated cuffs and hem
- Reflective detail for enhanced visibility
- Weighs less than 200g, based on size 12

SOFTSHELL

DWL081 SPOTLIGHT SOFTSHELL

Sizes: UK: 8-20
USA: 4-16

ILUS
D-LAB STRETCH



Blue Wave (4PL)



Black (800)



- Ilus D-Lab woven stretch polyester fabric
- Windproof membrane
- Water repellent finish
- Lightweight
- Detachable technical hood with adjusters
- Ventilated back panel
- Stretch bound cuff
- 2 x zipped lower pockets
- Adjustable shockcord hem
- Reflective detail for enhanced visibility
- 35% lighter than our traditional D-LAB Softshell
- Weighs less than 500g, based on size 12
- Fabric waterproof up to 5000mm, breathability rating 10,000/m2/24hrs

DWL073 IRRADIATE SOFTSHELL

Sizes: UK: 8-18
USA: 4-14

ILUS
D-LAB STRETCH



Black (800)



Magenta (868)



- Ilus D-Lab woven stretch polyester fabric
- Windproof membrane
- Water repellent finish
- Lightweight
- Ventilated back panel
- 2 x zipped lower pockets
- Adjustable shockcord hem and neck cinch
- Stretch bound cuff
- Reflective detail for enhanced visibility
- 35% lighter than our traditional D-LAB Softshell
- Weighs less than 400g, based on size 12
- Fabric waterproof up to 5000mm, breathability rating 10,000/m2/24hrs

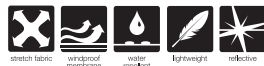
DWL074 IRRADIATE SOFTSHELL GILET

Sizes: UK: 8-18
USA: 4-14

ILUS
D-LAB STRETCH



Black (800)



- Ilus D-Lab woven stretch polyester fabric
- Windproof membrane
- Water repellent finish
- Lightweight
- Stretch binding at armhole
- 1 x zipped chest pocket
- 1 x zipped rear pocket
- Adjustable shockcord neck cinch
- Stretch bound hem
- Reflective detail for enhanced visibility
- 35% lighter than our traditional D-LAB Softshell
- Weighs less than 300g, based on size 12
- Fabric waterproof up to 5000mm, breathability rating 10,000/m2/24hrs

MIDLAYERS

DWL075 TEMPORIZE SOFTSHELL

Sizes: UK: 8-20
USA: 4-16



- Ilus Softshell warm backed woven fabric
- Wind resistant fabric
- Water repellent finish
- Grown on hood with adjusters
- 2 x zipped lower pockets



Imperial Purple Across
& Up Print (94K)



Blue Wave Ripple
Print (4PL)



Magenta Square
Dance Print (868)



Black Marl Print (800)

DWL082 ACCELERATE SOFTSHELL

Sizes: UK: 8-20
USA: 4-16



- Ilus Softshell warm backed woven fabric
- Wind resistant fabric
- Water repellent finish
- Grown on hood with adjusters
- 2 zipped lower pockets
- Weighs less than 600g, based on size 12



Black (800)



Blue Wave (4PL)



Imperial Purple / Rum (94K)

DWL076 TEMPORIZE SOFTSHELL GILET

Sizes: UK: 8-20
USA: 4-16



- Ilus Softshell warm backed woven fabric
- Wind resistant fabric
- Water repellent finish
- Grown on hood
- 2 x zipped lower pockets



Black (800)

DWL077 OMNIFIC CORE STRETCH

Sizes: UK: 8-18
USA: 4-14

- Polyester jersey fabric with bonded scrim back
- Grown on hood with adjusters
- 1 x zipped chest pocket
- 2 x zipped lower pockets plus kangaroo handwarmer pockets



Charcoal Grey Marl (87S)



Ash Grey Marl (3GO)

DWL066 INCLINED HOODIE

Sizes: UK: 8-20
USA: 4-16

- 100% polyester
- Grown on hood
- Kangaroo pocket to front



Black (800)

DWA040 ENLIVEN FLEECE

Sizes: UK: 8-20
USA: 4-16



- 100% polyester velour microfleece
- Anti-pill finish
- Half zip with autolock slider



Magenta (868)



Black (800)

DWL017 LOVELINE CORE STRETCH

Sizes: UK: 8-20
USA: 4-16



- Lightweight Ilus Core warm backed knitted stretch fabric
- Quick drying
- Half zip



Blue Jewel (9VT)



White (900)



Black (800)



Magenta (868)



Key Lime (59Y)

DWA023 WOMENS FREEZE DRY FLEECE

Sizes: UK: 8-20
USA: 4-16



- 1 side brushed / 1 side anti-pill microfleece fabric
- Half zip



Black (800)



Imperial Purple (94K)



Blue Wave (4PL)

BASELAYER

DWU021 CLIMATISE L/SLEEVE CREW NECK

Sizes: UK: 8-20
USA: 4-16



Black (800)



- BODY carbon base layer - 51% polyester/ 49% Bamboo
- Natural wicking and anti-bacterial odour control properties
- Quick drying
- Thermal properties

DWU032 CLIMATISE S/SLEEVE CREW NECK

Sizes: UK: 8-20
USA: 4-16



Black (800)



- BODY carbon base layer - 51% polyester/ 49% Bamboo
- Natural wicking and anti-bacterial odour control properties
- Quick drying
- Thermal properties

DWU020 CLIMATISE LEGGING

Sizes: UK: 8-20
USA: 4-16



Black (800)



- BODY carbon base layer - 51% polyester/ 49% Bamboo
- Natural wicking and anti-bacterial odour control properties
- Quick drying
- Thermal properties

WATERPROOF JACKETS

DWW073 UP TO SPEED JACKET

Sizes: UK: 8-18
USA: 4-14



Black (800)



A modern alternative to traditional technical outdoorwear, this 3 layer membrane shell is waterproof and breathable up to 10000mm and provides full stretch for freedom of movement



- Waterproof & breathable Ared V02 10000 3-layer membrane polyester 4-way stretch fabric
- Durable water repellent finish
- Taped seams
- Grown on technical wired peaked hood with high collar and adjusters
- Roll away hood function
- Hi-tech water resistant centre front zip with inner zip guard
- 2-way underarm ventilation zippers
- 4 x pockets with hi-tech water repellent zips
- Articulated sleeve design
- Adjustable cuffs with rubber tabs
- 1 x zipped sleeve pass pocket
- Adjustable shockcord hem
- 1 x zipped internal pocket incl. MP3 port
- Weighs less than 700g, based on size 12
- Breathability rating 10,000/m2/24hrs

DWW074 MIND TRIP JACKET

Sizes: UK: 8-20
USA: 4-16



Imperial Purple / Rum (94K)



Black (800)



Key Lime /
Energy Green (59Y)



- Waterproof and breathable Ared V02 20000 polyester 4-way stretch fabric
- Durable water repellent finish
- Taped seams
- Grown on technical wired peaked hood with high collar and adjusters
- Roll away hood function
- Hi-tech water resistant centre front zip with inner zip guard
- Underarm ventilation zips
- Articulated sleeve design
- Adjustable cuffs
- 1 x zipped chest pocket with water repellent zip
- 2 x zipped lower pockets with water repellent zips
- Adjustable shockcord hem
- Part mesh, part polyester taffeta lining
- 1 x zipped internal pocket incl. MP3 port
- Weighs less than 700g, based on size 12
- Breathability rating 10,000/m2/24hrs

DWW075 ASTONISH JACKET

Sizes: UK: 8-18
USA: 4-14



Blue Wave (4PL)



Black (800)



Magenta (868)



- Waterproof and breathable Ared V02 10000 polyester 4-way stretch fabric
- Durable water repellent finish
- Taped seams
- Detachable technical wired peaked hood with adjusters
- Hi-tech water resistant centre front zip with inner zip guard
- Underarm ventilation zips
- Articulated sleeve design
- Adjustable cuffs
- 1 x zipped chest pocket
- 2 x longer length lower pockets with water repellent zips
- Adjustable shockcord hem
- Part mesh, part polyester taffeta lining
- 1 x zipped internal pocket incl. MP3 port
- Weighs less than 700g, based on size 12
- Breathability rating 10,000/m2/24hrs

WATERPROOF JACKETS

DWW076 LIMBER UP JACKET

Sizes: UK: 8-20
USA: 4-16



- Waterproof and breathable Ared 5000 coated polyester fabric with strategically placed 4-way stretch panels
- Water repellent finish
- Taped seams
- Grown on technical wired peaked hood with high collar and adjusters
- Roll away hood function
- Hi-tech water resistant centre front zip with inner zip guard
- Articulated sleeve design
- Adjustable cuffs
- 2 x zipped lower pockets
- Adjustable shockcord hem
- Part mesh, part polyester taffeta lining
- 1 x zipped internal pocket incl. MP3 port
- Weighs less than 600g, based on size 12



Virtual Pink (48S)



Energy Green (3FR)



Black (800)

DWW078 BOASTED JACKET

Sizes: UK: 8-20
USA: 4-16



- Waterproof and breathable Ared 5000 coated polyester fabric
- Water repellent finish
- Taped seams
- Grown on hood with adjusters
- Elasticated cuffs
- 2 x zipped lower pockets
- Adjustable shockcord hem
- Mesh lined
- Packs away into zipped lower pocket with attachment system
- Weighs less than 500g, based on size 12



Smokey Ripple Print (9AV)



Black Marl Print (800)



Blue Wave Square Dance Print (4PL)



Virtual Pink (48S)



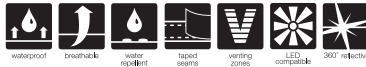
Energy Green Across & Up Print (3FR)



WATERPROOF JACKETS / OVERTROUSERS

DWW056 NIGHT GAZE JACKET

Sizes: UK: 8-20
USA: 4-16



- Ared 5000 lightweight waterproof & breathable fabric
- Water repellent finish
- Taped seams
- Easy adjust neck cinch
- Mesh ventilated back panels
- 1 x zipped chest pocket
- 1 x zipped rear pocket
- LED compatible
- Adjustable cuffs
- Adjustable shockcord hem
- Mesh lined
- 360° Reflective detail for enhanced visibility
- Weighs less than 800g, based on size 12



Fluro Pink (72P)



Black (800)

DWW063 AQ-LITE JACKET

Sizes: UK: 8-20
USA: 4-16



- Lightweight waterproof and breathable Ared 3000 fabric
- Water repellent finish
- Taped seams
- Easy adjust neck cinch
- Long back with scooped elasticated hem
- 1 x zipped rear pocket
- Reflective detail for enhanced visibility
- Weighs less than 500g, based on size 12



Fluro Pink (72P)



Black (800)



Fluro Blue (3FN)

DWW062 WOMENS ROTATION JACKET

Sizes: UK: 8-20
USA: 4-16



- Waterproof and breathable Ared 3000 fabric
- Water repellent finish
- Taped seams
- Easy adjust neck cinch
- Mesh ventilated back panels
- 1 x zipped chest pocket
- 1 x zipped rear pocket
- Adjustable shockcord hem
- Mesh lined
- 360° Reflective detail for enhanced visibility
- Weighs less than 800g, based on size 12



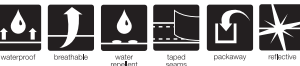
Fluro Yellow (0M0)



Black (800)

DWW079 WOMENS ASSEMBLE OVERTROUSERS

Sizes: UK: 8-20
USA: 4-16



- Waterproof and breathable Ared 5000 coated polyester fabric
- Water repellent finish
- Taped seams
- Elasticated and drawcord waist
- 2 side pocket openings
- Ankle zips
- Packs down into a small stuff sack with attachment system
- Reflective detail for enhanced visibility
- Weighs less than 300g, based on size 12



Black (800)



 You have 2 new Friend Requests.

YOUTH JERSEYS

DKT008 RIDE OFF JERSEY

Sizes: 7-8,9-10,
11-12 Yrs. 32", 34"

BODY
NEXT TO SKIN TECH



Fluro Green (59X)



Hawaiian Blue (4DC)



- BODY lightweight polyester mesh fabric
- Anti-bacterial odour control treatment
- Good wicking performance
- Quick drying
- Mesh venting zones
- 3/4 length venting zip with autolock slider
- Long back with scooped elasticated hem
- 3 compartment pockets at rear
- Reflective detail for enhanced visibility

DKT009 FALLOUT JERSEY

Sizes: 7-8,9-10,
11-12 Yrs. 32", 34"



Peacoat Blue
Downhill Print (87R)



Briar Grey Juxtaposed
Print (867)



- Lightweight polyester fabric
- Good wicking performance
- Quick drying

DKT003 YOUTH BOARDBREAK T

Sizes: 7-8,9-10,
11-12 Yrs. 32", 34"



Fluro Pink (72P)



Fluro Green (59X)



Black (800)



Fiery Red (657)



Blue Wave (4PL)



- Lightweight polyester mesh fabric
- Good wicking performance
- Quick drying
- Reflective detail for enhanced visibility

T-SHIRTS

DBT004 RAT RACE T

Sizes: 7-8,9-10,
11-12 Yrs. 32", 34"



- Q-Wic Cotton/ Polyester fabric
- Good wicking performance
- Quick drying



Charcoal Grey Marl (87S)



Energy Green (3FR)

DBT005 PEAK T

Sizes: 7-8,9-10,
11-12 Yrs. 32", 34"



- Q-Wic Cotton/ Polyester fabric
- Good wicking performance
- Quick drying



White (900)



Ash Grey Marl (3G0)

DGT004 LOVE BIKE T

Sizes: 7-8,9-10,
11-12 Yrs. 32", 34"



- Q-Wic Cotton/ Polyester fabric
- Good wicking performance
- Quick drying



Blue Wave (4PL)



Charcoal Grey Marl (87S)

DGT005 BUTTERFLY PEAK T

Sizes: 7-8,9-10,
11-12 Yrs. 32", 34"



- Q-Wic Cotton/ Polyester fabric
- Good wicking performance
- Quick drying



Imperial Purple (94K)



White (900)

LEGWEAR

DKJ008 CROSS TRACKS CONVERTIBLE SHORT

Sizes: 7-8,9-10,
11-12 Yrs. 26", 28"



- 100% washed cotton canvas
- Garment enzyme washed for softer handle
- Interactive attachment loops at waistband
- Belt loops
- Adjustable waist system
- Interacts with DKJ010



Briar Grey (867)



Desert Stone (659)

DKJ009 BACKDOWN CONVERTIBLE SHORT

Sizes: 7-8,9-10,
11-12 Yrs. 26", 28"



- Soft handle peached polyester microfibre fabric
- Water repellent finish
- Interactive attachment loops at waistband
- Drawcord waist fastening
- Belt loops
- Hook & loop fly opening
- Multiple pockets
- Interacts with DKJ010



Hawaiian Blue (4DC)



Key Lime (59Y)

DKJ010 ON YOUR BIKE II CYCLE SHORT

Sizes: 7-8,9-10,
11-12 Yrs. 26", 28"



- Polyester/elastane stretch fabric
- Lightweight
- Quick drying
- 2D molded double density insert
- Interactive attachment loops at waistband
- Elasticated waistband
- Flat locked seams for comfort
- Gel gripper tape at hem
- Interacts with DKJ008 & DKJ009



Black (800)

SOFTSHELLS

DKL025 ROUND & ABOUT SOFTSHELL

ILUS
D-LAB SOFTSHELL



Black (800)



- Ilus D-Lab Softshell warm backed woven fabric
- Windproof membrane
- Water repellent finish
- Detachable hood with elastication
- Underarm ventilation zips
- Stretch bound cuff
- 2 x zipped lower pockets
- Adjustable shockcord hem age 7+
- Reflective detail for enhanced visibility
- Fabric waterproof up to 5000mm, breathability rating 10,000/m2/24hrs

Sizes: 7-8,9-10,
11-12 Yrs. 32", 34"

DKL027 HIT THE ROAD SOFTSHELL

ILUS
SOFTSHELL



Black Multi Line Out Print (48T)



White Splatter Print
(900)



Key Lime Marl
(59Y)



Imperial Purple Rain
Print (94K)



Black Marl Print
(800)



- Ilus Softshell warm backed woven fabric
- Wind resistant
- Water repellent finish
- Grown on hood
- 2 zipped lower pockets

Sizes: 7-8,9-10,
11-12 Yrs. 32", 34"

DKL028 DRIFTED HOODIE



- Polyester jersey fabric with bonded scrim back
- Grown on hood
- Kangaroo handwarmer pockets

Sizes: 7-8,9-10,
11-12 Yrs. 32", 34"



Classic Blue / Hawaiian Blue (658)



Briar Grey / Key Lime
(867)



Grape Juice /
Magenta (70L)

MIDLAYER / BASELAYER

DKL011 WRIGGLE CORE STRETCH

ILUS
CORE TECHNOLOGY



Black (800)



- Ilus Core warm backed knitted stretch fabric
- Quick drying
- Half zip



Jem Pink (8ZX)



Lime Zest (65C)



Blue Jewel (9VT)



White (900)



Grape (420)

DKA020 FREEZE JAM FLEECE



- 1 side brushed/ 1 side anti-pill microfleece fabric
- Half zip



Blue Jewel (9VT)



Black (800)



Jem Pink (8ZX)

DKU004 COOL OFF BASE LAYER SET



- Kids base layer set
- Thermal properties
- Fast wicking and quick drying properties



Grape (420)



Black (800)

WATERPROOF JACKETS / OVERTOUSER

DKW038 HIGH & DRY JACKET

Sizes: 7-8,9-10,
11-12 Yrs. 32", 34"



- Waterproof and breathable Ared V02 10000 polyester 4-way stretch fabric
- Durable water repellent finish
- Taped seams
- Grown on technical hood with high collar and elasticsation
- Roll away hood function
- Hi-tech water resistant centre front zip with inner zip guard
- Articulated sleeve design
- Adjustable cuffs

- 1 x zipped chest pocket with water repellent zip
- 2 x longer length lower pockets with water repellent zips
- Adjustable shockcord hem age 7+
- Part mesh, part polyester taffeta lining
- 1 x zipped internal pocket incl. MP3 port age 7+
- Reflective detail for enhanced visibility



Classic Blue /
Hawaiian Blue (658)



Grape Juice /
Magenta (70L)



Black (800)

DKW039 STORMWALK JACKET

Sizes: 7-8,9-10,
11-12 Yrs. 32", 34"



- Waterproof and breathable Ared 5000 coated polyester fabric
- Water repellent finish
- Taped seams
- Grown on hood with elasticsation
- Elasticated cuffs
- 2 zipped lower pockets
- Adjustable shockcord hem age 7+
- Mesh lined
- Packs away into zipped lower pocket with attachment system



Hawaiian Blue Splatter
Print (4DC)



Black Brushstrokes
Print (800)



Black Multi Line Out Print (48T)



Blue Wave Rain Print (4PL)



Imperial Purple Line Out
Print (94K)



Magenta Splatter Print
(868)

DKW040 FREE WHEELER JACKET

Sizes: 7-8,9-10,
11-12 Yrs. 32", 34"



- Waterproof and breathable Ared 5000 coated polyester fabric
- Water repellent finish
- Taped seams
- Fixed foldaway hood with elasticsation
- Elasticated cuffs

- 2 x zipped lower pockets
- Adjustable shockcord hem age 7+
- Mesh lined
- 360° Reflective detail for enhanced visibility



Black (800)



Key Lime / Black
(59Y)



Virtual Pink (48S)

DKW041 YOUTH ASSEMBLE II OVERTROUSER

Sizes: 7-8,9-10,
11-12 Yrs. 26", 28"



- Waterproof and breathable Ared 5000 coated polyester fabric
- Water repellent finish
- Taped seams
- Elasticated waistband
- 2 side pocket openings
- Ankle zips
- Packs down into a small stuff sack with attachment system
- Reflective detail for enhanced visibility



Black (800)



RUCKSACKS / EQUIPMENT

DUE020 UNISEX 25L DAY PACK

One Size 50(H) 30(L)
20(D) cm, (25L)



- Hardwearing multi textured polyester fabrics with PU coating
- Water repellent finish
- Internal pouch pocket to house Aqua Flow hydration system
- Multi zipped compartments including side mesh water bottle pockets
- Scrim lined security pocket
- Mesh overflow storage compartment with adjustable compression straps
- Easy grab zip pullers
- Neoprene padded waist belt and shoulder straps for added comfort and support
- Adjustable waist belt and shoulder straps
- Adjustable sliding chest harness
- Oxy Flow ventilated back design
- EVA foam back protection
- Reflective detail for enhanced visibility
- LED compatible
- Integrated rain cover with reflective trim
- Easy carry handle
- 25 ltr total capacity



Key Lime (59Y)



Black (800)

DUE021 LARGE HYDRO PACK

One Size 45(H) 22(L)
12(D) cm, (5.5L)



- Hardwearing multi textured polyester fabrics with PU coating
- Water repellent finish
- 2 ltr capacity Aqua Flow hydration system
- Easy fill hydration bladder with bite valve and stop tap
- Hydration bladder access through front zipped compartment
- Pipe access through both shoulder straps
- Mesh overflow storage compartment with adjustable compression straps
- Easy grab zip pullers
- Lightly padded waist belt for comfort and support
- 2 x waist belt pockets
- Adjustable waist belt and shoulder straps
- Lightweight PU open air mesh shoulder straps
- Adjustable sliding chest harness
- Oxy Flow ventilated back design
- Reflective detail for enhanced visibility
- LED compatible
- Easy carry handle



Black (800)



Key Lime (59Y)

RUCKSACKS / EQUIPMENT

DUE022 CLASSIC HYDRO PACK

One Size 40(H) 22(L)
5(D) cm



Black (800)

- Hardwearing multi textured polyester fabrics with PU coating
- Water repellent finish
- 1.5 ltr capacity Aqua Flow hydration system
- Easy fill hydration bladder with bite valve and stop tap
- Hydration bladder access through side zipped compartment
- Pipe access through both shoulder straps
- Easy grab zip pullers
- Front mesh stow pocket with bound edge
- Integrated mesh helmet holder cover with attachment system
- Lightweight PU open air mesh shoulder straps
- Adjustable shoulder straps
- Adjustable sliding chest harness
- Oxy Flow ventilated back design
- Reflective detail for enhanced visibility
- LED compatible
- Easy carry handle

RUCKSACKS / EQUIPMENT

DUE023 CARRY ON SATCHEL

One Size 28(H) 44(L)
10(D) cm



Black (800)

- Hardwearing plastic coated polyester
- Water repellent finish
- Fully adjustable padded shoulder strap
- Large front flap to keep rain out with hook and loop closure
- External zipped pocket
- External mesh side pocket with stretch bound edge
- Internal zipped pocket for access to main compartment
- Padded computer sleeve inside main compartment
- Ability to hold 15" laptop
- Additional zipped compartment with pen holder & mobile phone pocket
- Reflective detail for enhanced visibility

DUE025 SILICONE DUFFLE 40L HOLDALL

One Size 28(H) 50(L)
28(D) cm, (80L)



Fiery Red (657)



Black (800)

- Lightweight polyester double ripstop fabric
- Silicone coating for increased strength and durability
- Water repellent finish
- 2-way zip access through to main compartment
- 2 x external end pockets; 1 x zipped, 1 x mesh with bound edge
- Easy grab zip pullers
- Compression straps
- Lightweight padded air mesh carry handles with hook & loop closure
- Adjustable & removable shoulder strap
- Packs away in to internal pouch pocket with carrier loop
- Reflective detail for enhanced visibility
- 40 ltr capacity

RUCKSACKS / EQUIPMENT

DUE024 SILICONE 30L RUCKSACK

One Size 44(H) 29(L) 15.5(D) cm, (13L)

- Lightweight polyester double ripstop fabric
- Silicone coating for increased strength and durability
- Water repellent finish
- Multi zipped compartments
- Easy grab zip pullers
- Front stow pocket with elasticated edge
- Lightweight padded air mesh shoulder straps
- Adjustable shoulder straps
- Compression straps
- Easy carry handle
- Packs away in to internal pouch pocket with carrier loop
- Reflective detail for enhanced visibility
- 30 ltr capacity



Black (800)



Hawaiian Blue (4DC)

DUE028 RAIN COVER

One Size 60(H) 42(L) 15(D) cm

- Lightweight PU coated polyester fabric
- Water repellent finish
- Suitable for light showers
- Elasticated bound edge
- Press stud fastener straps for a secure fit
- High-Visibility
- Packs away in to attached pouch with hanger loop
- Reflective detail for enhanced visibility
- Fits bags of approx 10-30L



Fluro Yellow (0M0)

DUE006 SILICONE RUCKSACK

One Size 47(H) 27.5(L) 10(D) cm, (13L)

- Lightweight polyester double ripstop fabric
- Silicone coating for increased strength and durability
- Water repellent finish
- Adjustable backstraps
- Packs down into a small stuff sack with attachment system
- Reflective detail for enhanced visibility
- 13 litre capacity



Fluro Blue / Iron Grey (3FN)



Iron Grey / Smokey Grey (9VW)



Fluro Pink / Iron Grey (72P)

DUE029 & DKE006 FLURO MESH VEST

DUE029: One Size 60(H) 40(L) 25(D) cm
DKE006: One Size 45(H) 30(L) 19(D) cm



- DUE029 Adult Fluro Mesh Vest
- Polyester mesh fabric
 - Elasticated & adjustable side body tabs
 - High-Visibility
 - Reflective detail for enhanced visibility

- DKE006 Child Fluro Mesh Vest
- Polyester mesh fabric
 - Elasticated side body
 - High-Visibility
 - Reflective detail for enhanced visibility



Fluro Blue (3FN)



Fluro Yellow (0M0)

ACCESSORIES

DUC001 CORE STRETCH BEANIE

Single size



- Lightweight Ilus Core warm backed knitted stretch fabric



Black (800)

DUC003 CORE STRETCH BALACLAVA

Single size



- Lightweight Ilus Core warm backed knitted stretch fabric



Black (800)

DUE027 LEG WARMERS

Single size



- Lightweight Ilus Core warm backed knitted stretch fabric
- Gel gripper tape at top and bottom edge
- Ankle zips
- Reflective detail



Black (800)

DUC004 CORE STRETCH HEADBAND

Single size



- Lightweight Ilus Core warm backed knitted stretch fabric
- Ergonomic ear shaping



Black (800)

DUC002 CORE STRETCH NECKGAITOR

Single size



- Lightweight Ilus Core warm backed knitted stretch fabric
- Adjustable shockcord top



Black (800)

DUE026 ARM WARMERS

Single size



- Lightweight Ilus Core warm backed knitted stretch fabric
- Reflective detail
- Gel gripper tape at top edge



Black (800)

ACCESSORIES

DUG001 CORE STRETCH GLOVE

Size: S/M, L/XL



- Lightweight Ilus Core warm backed knitted stretch fabric
- Textured gripped palm
- Secure clip attachment



Black (800)

DUG003 SOFTSHELL SMART GLOVE

Size: S/M, L/XL



- Ilus Softshell warm backed woven fabric
- Compatible with capacitive touchscreen devices, including the iPad and iPhone
- Textured gripped palm
- Secure clip attachment
- Adjustable cuffs



Black (800)

DUG002 SOFTSHELL GLOVE

Single size



- Ilus Softshell warm backed woven fabric
- Textured gripped palm
- Secure clip attachment
- Adjustable cuffs



Black (800)

DMG021 PROFILE CYCLE MITT

Sizes: S, M, L

- Lightweight stretch fabric zones at the back of hand and between fingers for extra flexibility and improved fit
- Hardwearing fabric palms
- Ergonomic Cushioning System (ECS) for extra comfort and and pressure relief
- Cotton towelling perspiration wipe
- Air venting holes to help keep hands cool and dry
- Integral finger pulls for easy removal
- Non snag hook and loop wrist fastener
- Gel print at wrist for better grip
- Reflective detail for enhanced visibility



Black (800)

DWG021 WOMENS PROFILE CYCLE MITT

Sizes: S, M, L

- Lightweight stretch fabric zones at the back of hand and between fingers for extra flexibility and improved fit
- Hardwearing fabric palms
- Ergonomic Cushioning System (ECS) for extra comfort and and pressure relief
- Cotton towelling perspiration wipe
- Air venting holes to help keep hands cool and dry
- Integral finger pulls for easy removal
- Non snag hook and loop wrist fastener
- Gel print at wrist for better grip
- Reflective detail for enhanced visibility



Black (800)

FABRIC STORIES



When you're doing your stuff we know you're gonna get sweaty. This is where Dare 2b BODY fabric kicks into gear. So just how will it keep you dry?

01/ Wicking

The technical yarn construction encourages sweat to move away from your skin to the surface of the fabric where it can evaporate.

02/ Quick drying

The technical synthetic fibers draw moisture away from the body so you stay dry.

03/ Anti-bacterial

The built in anti-bacterial odor control treatment eliminates bacteria which multiply in the presence of dirt, moisture and heat.

04/ Easy Care

They're also easy to look after, follow the instructions and wash when dirty. Simple.



Stay dry and comfortable all day with our special fabric designed to continually move moisture away from the skin, allowing it to evaporate naturally.

01/ Lightweight

A finer yarn means a lighter, faster you.

02/ Quick drying

The technical synthetic fibers draw moisture away from the body so you stay dry.

03/ Wicking

The technical yarn construction encourages sweat to move away from your skin to the surface of the fabric where it can evaporate.



Stay dry and comfortable all day with our special fabric designed to continually move moisture away from the skin, allowing it to evaporate naturally.

01/ Lightweight

A finer yarn means a lighter, faster you.

02/ Quick drying

The technical synthetic fibers draw moisture away from the body so you stay dry.

03/ Wicking

The technical yarn construction encourages sweat to move away from your skin to the surface of the fabric where it can evaporate.

04/ Anti-bacterial

Q-Wic+ tees also come with an anti-bacterial treatment for odour control.



Some of our Dare 2b products are available in D-LYT flourescent colourways, keeping you safer in low light conditions.



Highly reflective trims and details for 360° reflective detail for enhanced visibility.

BASE LAYER

The key to the performance of any clothing is intelligent layering and the foundation starts with a clever base layer.



New to our range is the BODY Carbon Bamboo bayer layers. Made from almost 50% Carbon bamboo, the fabric is unique and offers:

01/ Warmth

Enhanced Polyester and carbon bamboo fibres provide brilliant thermal properties.

02/ Quick Drying

Holds very little moisture which is easily evaporated from the surface of the fabric

03/ Wicking

The fabric construction encourages moisture to move away from the body.

04/ Anti-Bacterial

Carbon Bamboo has natural anti-bacterial properties which eliminates bacteria and odour



The Dare 2b Aqua Flow reservoir system allows for rehydration whilst active.



Oxy Flow products are uniquely designed to allows air to circulate between the fabric and the skin, keeping the wearer more comfortable.



Products made with Ilus Core Stretch fabric are extremely versatile. Available in two weights as a mid or base layer option.

01/ Warmth

Provides warmth without the weight.

02/ Stretch

For greater freedom of movement.

03/ Quick drying

The technical synthetic fibres draw moisture away from the body.

04/ A finer yarn

A finer yarn means a faster you.



As the saying goes; sometimes the oldies are the goodies. Take fleece for instance, with just a little improvement to the hand feel our WULA fleece is an instant hit.

01/ Warmth

Provides warmth with the reassuring comfort factor.

02/ Quick Drying

The technical synthetic fibers draw moisture away from the body so you stay dry.

03/ Lightweight

A finer yarn means a lighter, faster you.

FABRIC STORIES



When you are biking, trail running or chasing fast thrills, you don’t want to wear bulky gear. You need to be fast and light and that’s when Dare 2b Ilus Windshell comes into its own.

01/ Wind resistant
State of the art fine denier yarns are tightly woven to keep the wind out.

02/ Lightweight
A finer yarn means a lighter, faster you.

03/ Compactability
Not just light to wear, they pack down in really small clever stuff-sacks. Stuff them into pockets or attach to your bike.

04/ Water repellency
Our fabrics are treated for stain and water resistance. Perfect for light rain conditions.



01/ Wind resistant
State of the art fine denier yarns are tightly woven to keep the wind out.

02/ Lightweight
A finer yarn means a lighter, faster you.

03/ Compactability
Not just light to wear, they pack down in really small clever stuff-sacks. Stuff them into pockets or attach to your bike.

04/ Water repellency
Our fabrics are treated for stain and water resistance. Perfect for light rain conditions.

05/ Stretch
For greater freedom of movement.



The Ilus Softshell family of fabrics offer a 21st century take on outerwear for fast mountain sports. Not as full on as a waterproof jacket Dare 2b’s Ilus Softshell fabrics are great at deflecting wind chill without the usual overheating problems that active users can face in traditional outerwear.

01/ Wind resistant
State of the art fine denier yarns are tightly woven to keep the wind out.

02/ Water repellency
Our fabrics are treated for stain and water resistance. Perfect for light rain conditions.



01/ Windproof membrane
State of the art fine denier yarns are tightly woven to keep the wind out.

02/ Water repellency
Our fabrics are treated for stain and water resistance. Perfect for light rain conditions.

03/ Lightweight
A finer yarn means a lighter, faster you.



Dare 2b Ared waterproof and breathable fabric technology offers a hierarchy of performance. Designed for a wide range of users, from experts to beginners. Ared fabrics at any level work to keep you dry, warm and comfortable on the slopes.

All Ared fabric have the following properties:

01/ Waterproof
Dare 2b's Ared fabrics are guaranteed to keep the wet out.

02/ Breathable
When you are active and working up a sweat Ared fabrics will ensure your body doesn't cool down from stale trapped sweat by allowing moisture to escape.

03/ Water Repellent
All jackets and overtrousers are treated with a water repellent finish so the water simply rolls off and won’t retain moisture.

04/ Windproof
Once the wind rolls in a sunny day on the slopes can turn cold in a flash. Ared fabrics are designed to be windproof so you can’t feel the chill.



01/ Waterproof
Dare 2b's Ared fabrics are guaranteed to keep the wet out.

02/ Breathable
When you are active and working up a sweat Ared fabrics will ensure your body doesn't cool down from stale trapped sweat by allowing moisture to escape.

03/ Water Repellent
All jackets and overtrousers are treated with a water repellent finish so the water simply rolls off and won’t retain moisture.

04/ Windproof
Once the wind rolls in a sunny day on the slopes can turn cold in a flash. Ared fabrics are designed to be windproof so you can’t feel the chill.

05/ Stretch
Some of our Ared fabrics also come with stretch whether that be in full or part stretch, we have strategically placed panels to ensure you never feel restricted.



For our most demanding users we offer our Ared V02 and Stretch products that provide you with superior performance outerwear. Designed for those who are at a level where any excess moisture or drop in core body temperature makes all the difference to your performance.

01/ Waterproof
Dare 2b's Ared fabrics are guaranteed to keep the wet out.

02/ Extra Breathable
Our Ared V02 10,000 and 20,000 fabrics offer extra breathability and comfort even in extreme wet weather conditions.

03/ Durable Water Repellent
A long lasting durable water repellent treatment is also adhered to our top fabrics to ensure liquids roll of the surface.

04/ Windproof
Once the wind rolls in a sunny day on the slopes can turn cold in a flash. Ared fabrics are designed to be windproof so you can’t feel the chill.

05/ Stretch
Some of our Ared fabrics also come with stretch whether that be in full or part stretch, we have strategically placed panels to ensure you never feel restricted.

MENS SIZE CHART

MENS BODY MEASUREMENTS	XS	S	M	L	XL	XXL	XXXL		
JACKETS / SHIRTS / T-SHIRTS									
CHEST SIZE (INCH)	36	38	40	42	44	47	50		
CHEST SIZE (CM)	92	97	102	107	112	119	127		
EU CONVERSIONS	46	48	50	52-54	56	58-60	62		
TROUSERS / SHORTS / CAPRI SHORTS									
WAIST SIZE (INCH)	30	32	33	34	36	38	40	42	44
WAIST SIZE (CM)	76	81	84	86	92	97	102	107	112
EU CONVERSIONS									
(Austria/Switzerland/Germany/Italy)	44	46	48	50	52	54	56	58	60
EU CONVERSIONS									
(Belgium/Spain/France/Portugal)	38	40	42	44	46	48	50	52	54
INSIDE LEG MEASUREMENTS									
REGULAR (INCHES)	32	32	32	32	32	32	32		
LONG (INCHES)	34	34	34	34	34	34	34		

BASE LAYERS				
MENS BODY BASE T-SHIRT	S/M	L/XL	XXL/XXXL	
CHEST SIZE (INCH)	38-40"	42-44"	47-50"	
MENS BODY BASE LEGGING	S/M	L/XL	XXL/XXXL	
WAIST SIZE (INCH)	32-34"	36-40"	42-48"	

WOMENS SIZE CHART

WOMENS BODY MEASUREMENTS UK	8	10	12	14	16	18	20
WOMENS BODY MEASUREMENTS USA	4	6	8	10	12	14	16
JACKETS / SHIRTS / T-SHIRTS							
CHEST SIZE (INCH)	32	34	36	38	40	42	44
CHEST SIZE (CM)	81	86	92	97	102	107	112
EU CONVERSIONS	34	36	38	40	42	44	46
TROUSERS / SHORTS / CAPRI SHORTS							
WAIST SIZE (INCH)	25	27	29	31	33	36	38
WAIST SIZE (CM)	63	68	74	79	84	91	96
EU CONVERSIONS							
(Austria/Switzerland/Germany/Netherlands)	34	36	38	40	42	44	46
EU CONVERSIONS							
(Belgium/Spain/France/Portugal)	36	38	40	42	44	46	48
EU CONVERSIONS							
(Italy)	40	42	44	46	48	50	52
INSIDE LEG MEASUREMENTS							
REGULAR (INCHES)	30	30	30	30	30	30	30
LONG (INCHES)	32	32	32	32	32	32	32

BASE LAYERS				
WOMENS BODY BASE T-SHIRT	XS/S	M/L	XL/XXL	
CHEST SIZE (INCH)	32-34"	36-38"	40-42"	
MENS BODY BASE LEGGING	XS/S	M/L	XL/XXL	
WAIST SIZE (INCH)	24-26"	28-30"	32-36"	

YOUTH RANGE SIZE CHART

AGE/SIZE - UNISEX	2	3-4	5-6	7-8	9-10	11-12	32"	34"
TROUSER/WAIST SIZE	2	3-4	5-6	7-8	9-10	11-12	26"	28"
HEIGHT (CM)	92	104	117	127	140	152.5	157	163
CHEST SIZE (INCHES)	22.5	23	23.5	25	27	28	30	32
CHEST SIZE (CM)	57	58.5	60	64	69	71	76	81
WAIST SIZE (INCHES)	19	19.5	20.5	21.5	23	24	26	28
WAIST SIZE (CM)	48	49.5	52	55	58.5	61	63.5	66
EU CONVERSIONS	92	104	116	128	140	152	164	176